

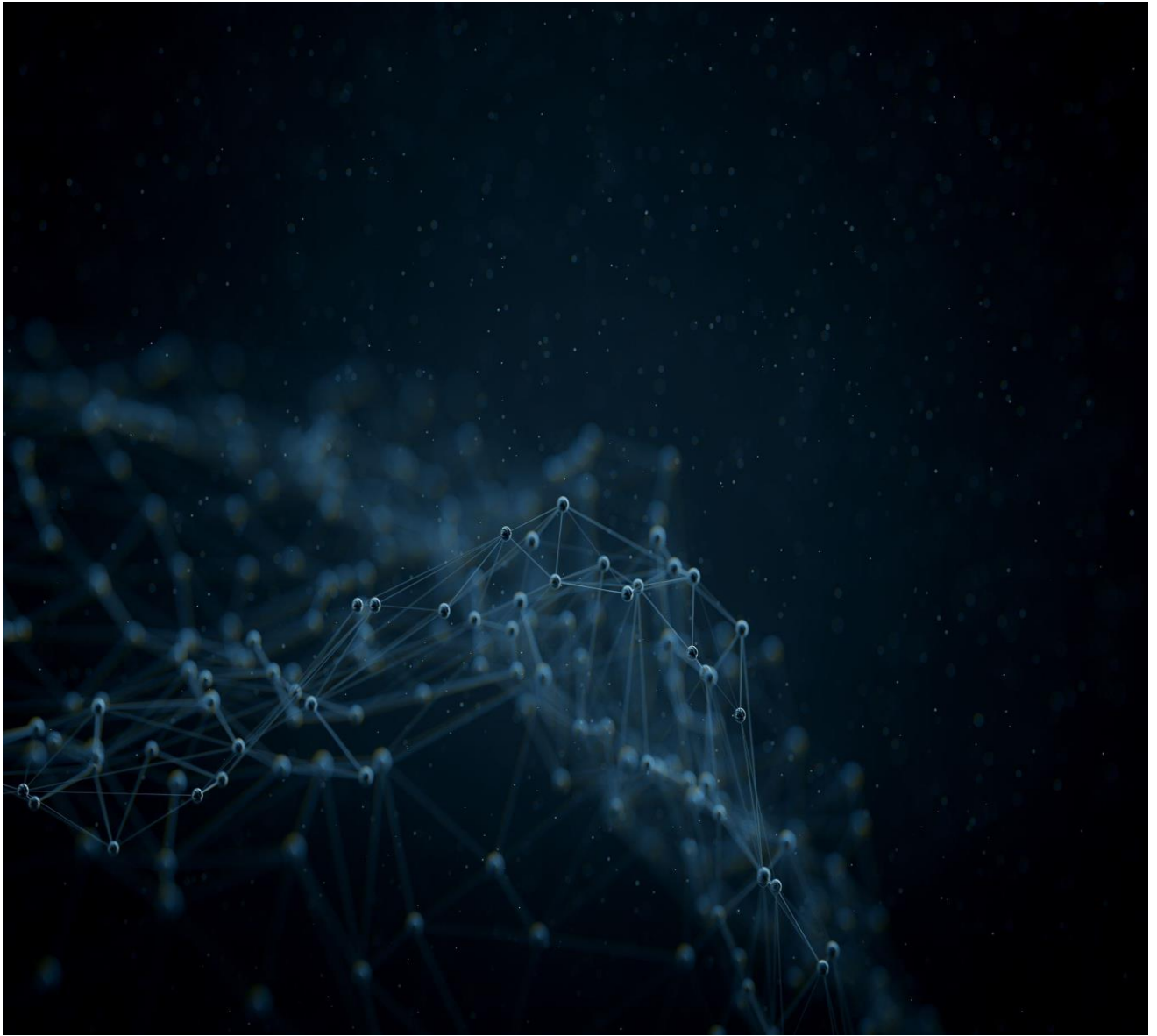
26 February 2020

# NEOSLIFT

## Elevator Gateway

Developed by: 1telecom **Australia**

**Version 1.0**



# Contents

- NEOSLIFT1 Elevator Gateway .....3
- NEOSLIFT1 BM Elevator Gateway.....4
- NEOSLIFT1 4G BM Elevator Gateway .....5
- NEOSLIFT-2 Elevator Gateway.....6
- NEOSLIFT2 BM Elevator Gateway.....7
- NEOSLIFT2 4G BM Elevator Gateway .....8



## NEOSLIFT1 ELEVATOR GATEWAY

- PSTN Replacement for NBN installations
- Elevator Voice Gateway supports 3G&4G SIMs (operates on 3G)
- Battery backup for up to 8+ Hours
- Includes wall mounting bracket
- Supplied with magnetic base antenna with 3 metre lead for best signal placement.
- Intercom line supports 48v DC & 90v AC ring (OK for wired distance up to 5KMs)

Dimensions For Each Component: 125mm W x 160mm D x 30mm H

Compliant with Australian Standards



## NEOSLIFT1 BM ELEVATOR GATEWAY

- PSTN Replacement for NBN installations
- SIM Elevator Voice Gateway (supports 3G & 4G SIMs operates on 3G)
- Battery backup for up to 8+ Hours
- Power status and battery monitoring with SMS notification to up to 3 numbers
- Includes wall mounting bracket
- Supplied with magnetic base antenna with 3 metre lead for best signal placement.
- Intercom line supports 48v DC & 90v AC ring (OK for wired distance up to 5KMs)
- Supports all mobile networks (800/850/900/1900/2100Mhz)

Dimensions For Each Component: 125mm W x 160mm D x 30mm H

Compliant with Australian Standards



## NEOSLIFT1 4G BM ELEVATOR GATEWAY

- PSTN Replacement for NBN installations
- 4G SIM Elevator Voice Gateway
- Battery backup for up to 8+ Hours
- Power status and battery monitoring with SMS notification to up to 3 numbers
- Includes wall mounting bracket
- Supplied with magnetic base antenna with 3 metre lead for best signal placement.
- Intercom line supports 48v DC & 90v AC ring (OK for wired distance up to 5KMs)
- Supports all mobile networks FDD LTE B1/B2/B3/B4/B5/B7/B8/B28 and UMTS bands 850/900/1900/2100 Mhz

Dimensions For Each Component: 125mm W x 160mm D x 30mm H

Compliant with Australian Standards



## NEOSLIFT-2 ELEVATOR GATEWAY

- PSTN Replacement for NBN installations
- Elevator voice gateway with failover protection
- 2 SIM -Dual carrier, supports 3G&4G SIMs (operates on 3G)
- Auto network failure detection with alternate carrier in second SIM slot
- Supplied with magnetic base antenna with 3 metre lead for best signal placement.
- Battery backup for up to 8 Hours
- Includes wall mounting bracket
- Intercom line supports 48v DC & 90v AC ring (OK for wired distance up to 5KMs)

Dimensions For Each Component: 125mm W x 160mm D x 30mm H

Compliant with Australian Standards



## NEOSLIFT2 BM ELEVATOR GATEWAY

- PSTN Replacement for NBN installations
- SIM Elevator voice gateway with failover protection
- 2 SIM -Dual carrier solution (supports 3G & 4G SIMs operates on 3G)
- Auto network failure detection with alternate carrier in second SIM slot
- Supplied with magnetic base antenna with 3 metre lead for best signal placement.
- Battery backup for up to 8 Hours
- Power status and battery monitoring with SMS notification to up to 3 numbers
- Includes wall mounting bracket
- Intercom line supports 48v DC & 90v AC ring (OK for wired distance up to 5KMs)
- Supports all mobile networks (800/850/900/1900/2100Mhz)

Dimensions For Each Component: 125mm W x 160mm D x 30mm H

Compliant with Australian Standards





## NEOSLIFT2 4G BM ELEVATOR GATEWAY

- PSTN Replacement for NBN installations
- 4G SIM Elevator voice gateway with failover protection
- 2 SIM -Dual carrier solution
- Auto network failure detection with alternate carrier in second SIM slot
- Supplied with magnetic base antenna with 3 metre lead for best signal placement.
- Battery backup for up to 8 Hours
- Power status and battery monitoring with SMS notification to up to 3 numbers
- Includes wall mounting bracket
- Intercom line supports 48v DC & 90v AC ring (OK for wired distance up to 5KMs)
- Supports all mobile networks FDD LTE B1/B2/B3/B4/B5/B7/B8/B28 and UMTS bands 850/900/1900/2100 Mhz

Dimensions For Each Component: 125mm W x 160mm D x 30mm H

Compliant with Australian Standards